



Geh- und Radweg

Atzenbrugg - Heiligeneich - Trasdorf

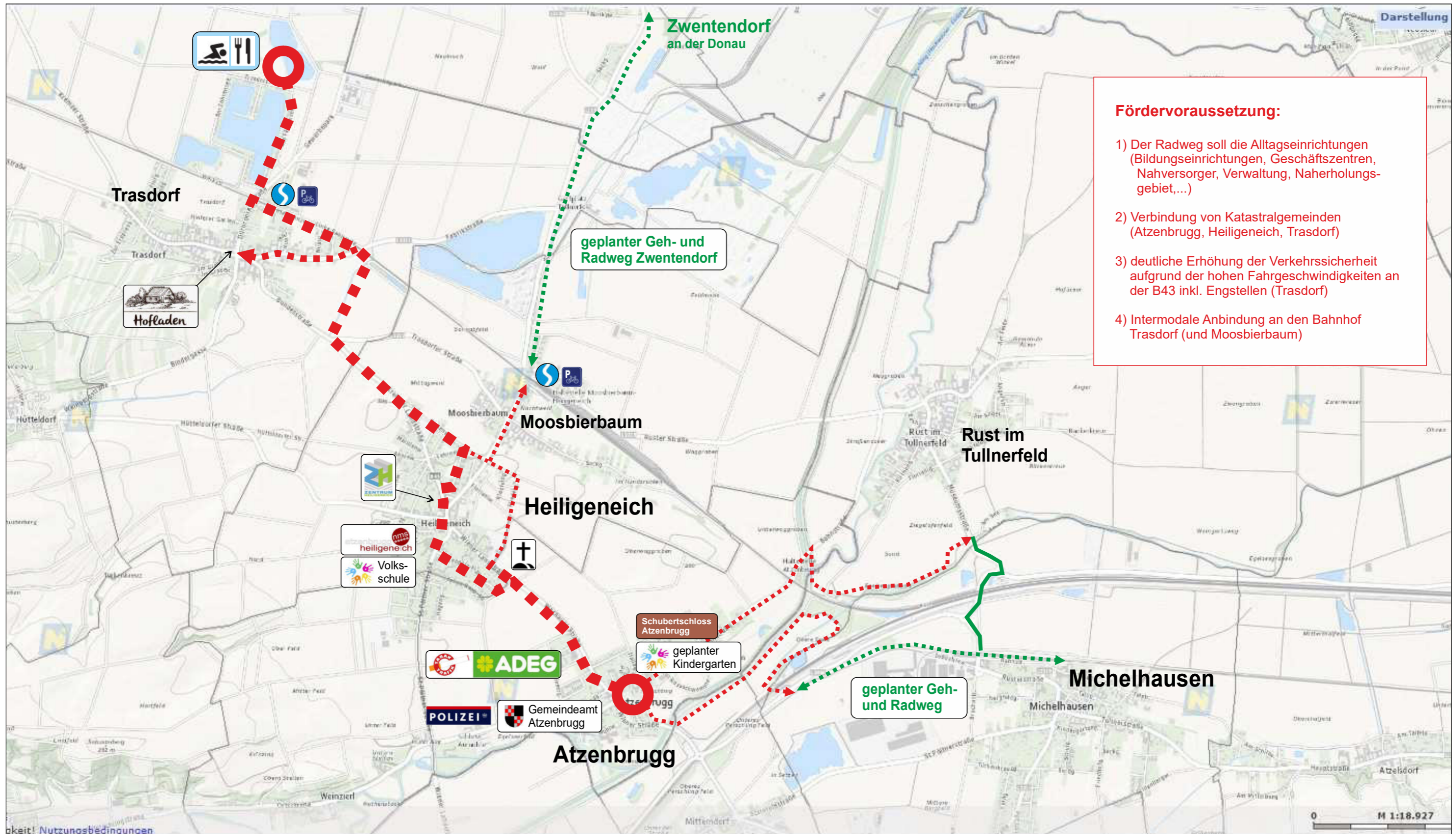
Machbarkeitsstudie

in Atzenbrugg

VORABZUG

Vorbesprechung ASV DI Merbaur 24.08.2021

Befahrung vor Ort 24.07.2021







Legende:

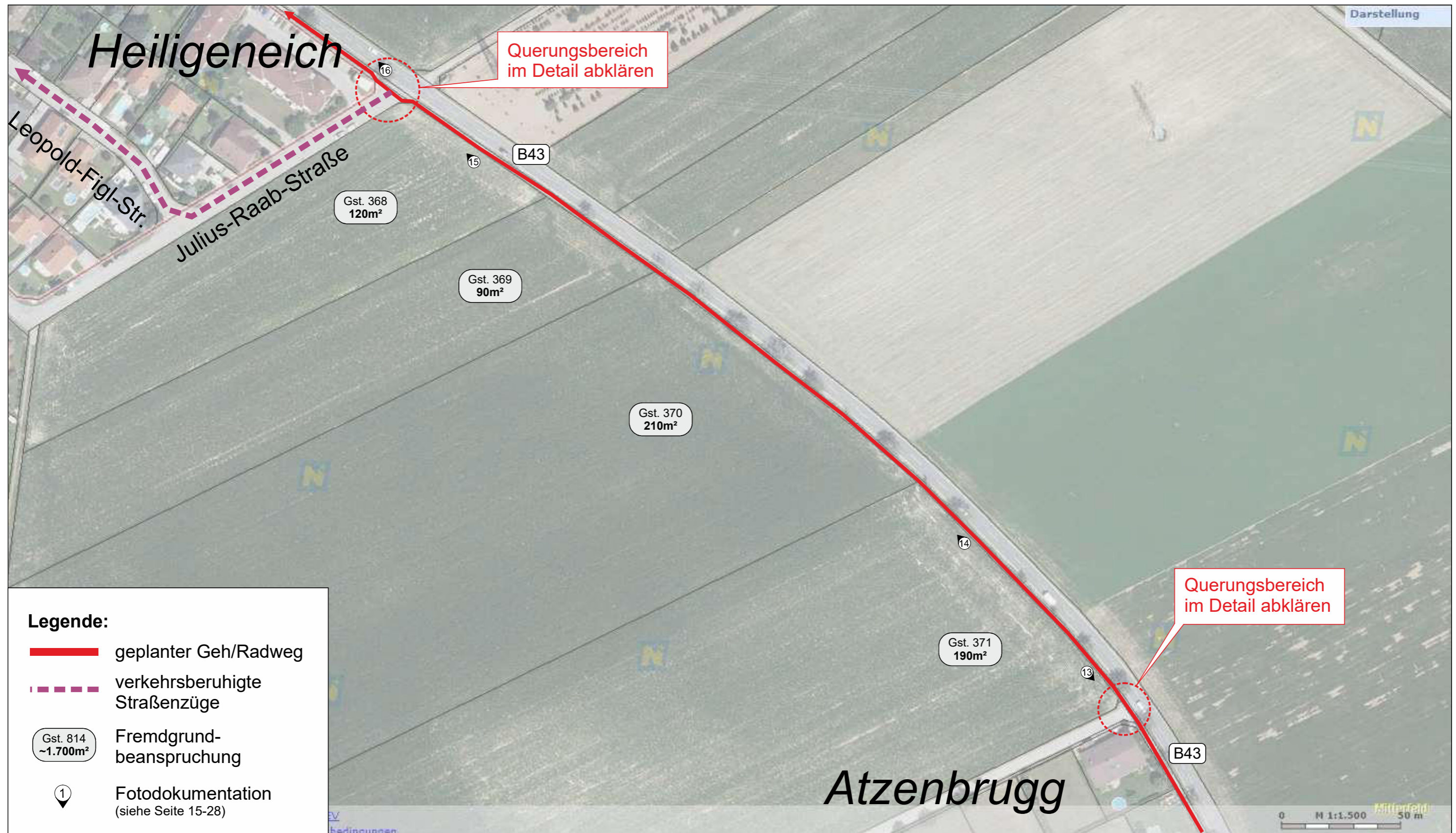
geplanter Geh/Radweg

fußläufige Querungshilfe




Fremdgrundbeanspruchung

Fotodokumentation (siehe Seite 15-28)





Legende:

-  geplanter Geh/Radweg
-  verkehrsberuhigte Straßenzüge
-  Fremdgrundbeanspruchung
-  Fotodokumentation (siehe Seite 15-28)




PIRO Plan + Partner
Ingenieurbüro für Verkehrsplanung
Ferdinandsgasse 4, 2351 Wr. Neudorf
0664/4560444, office@piro-plan.at

GZ
202140

Wiener Neudorf
September 2021

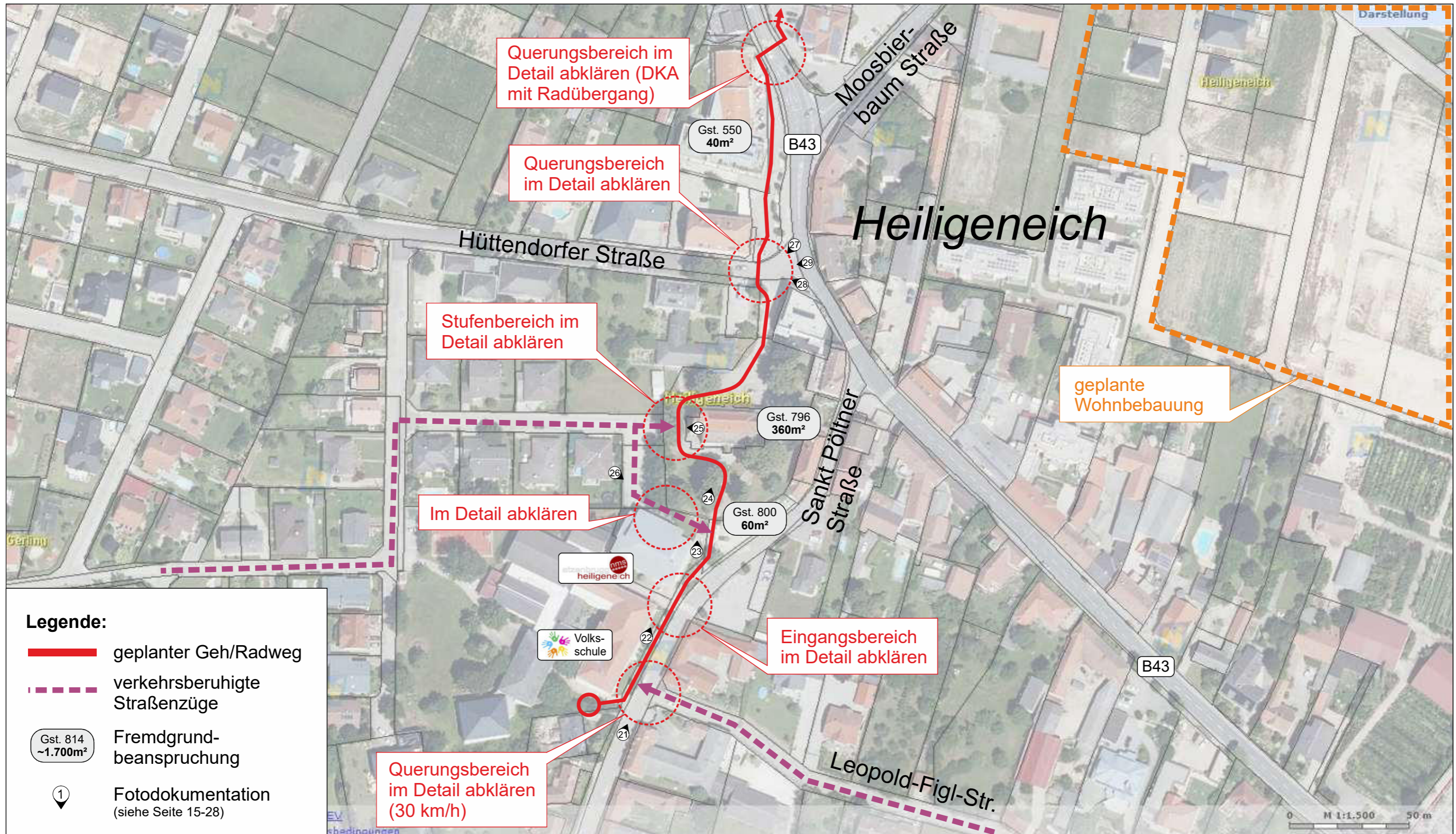
N



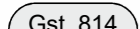

VERKEHRSKONZEPT



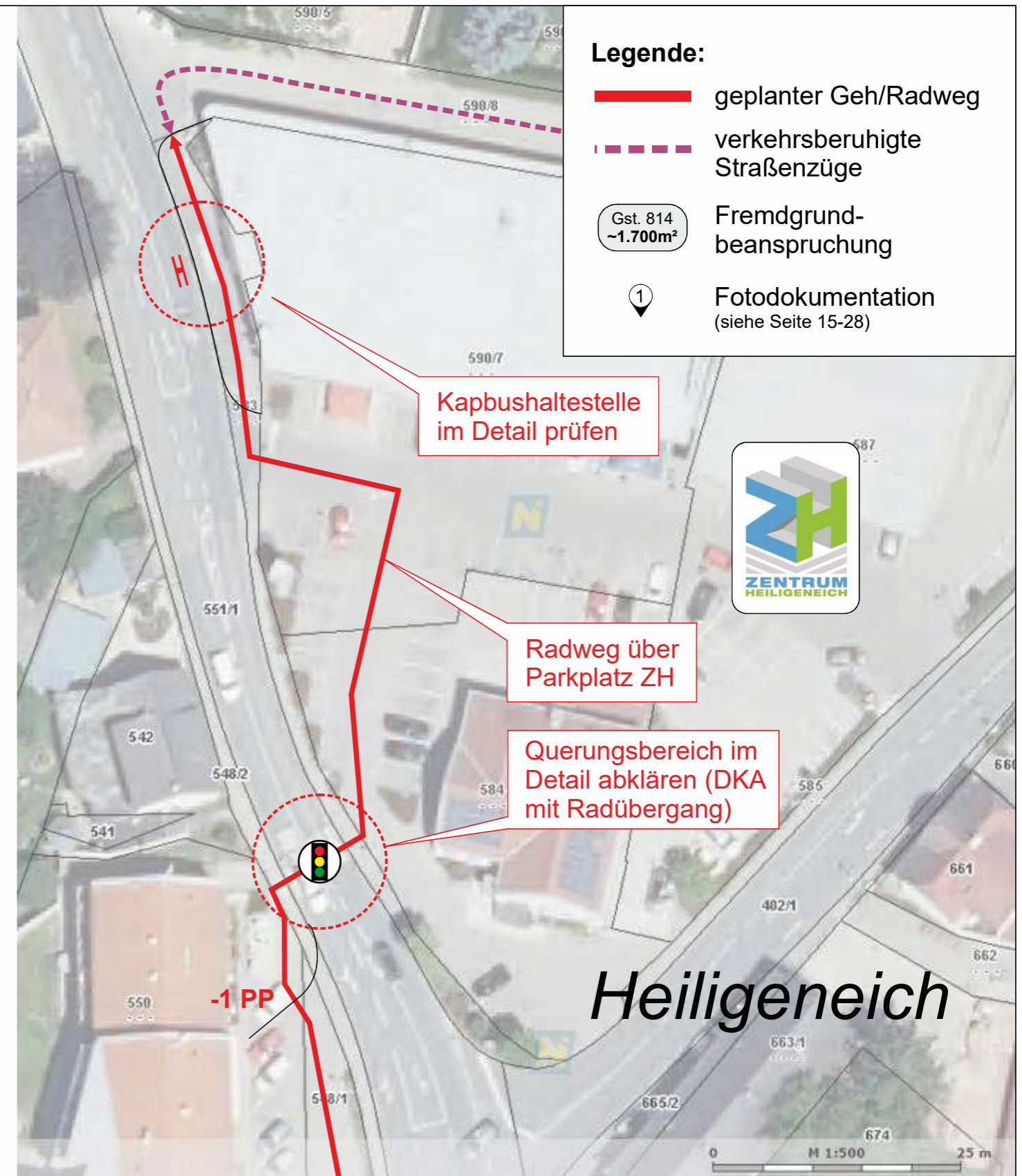
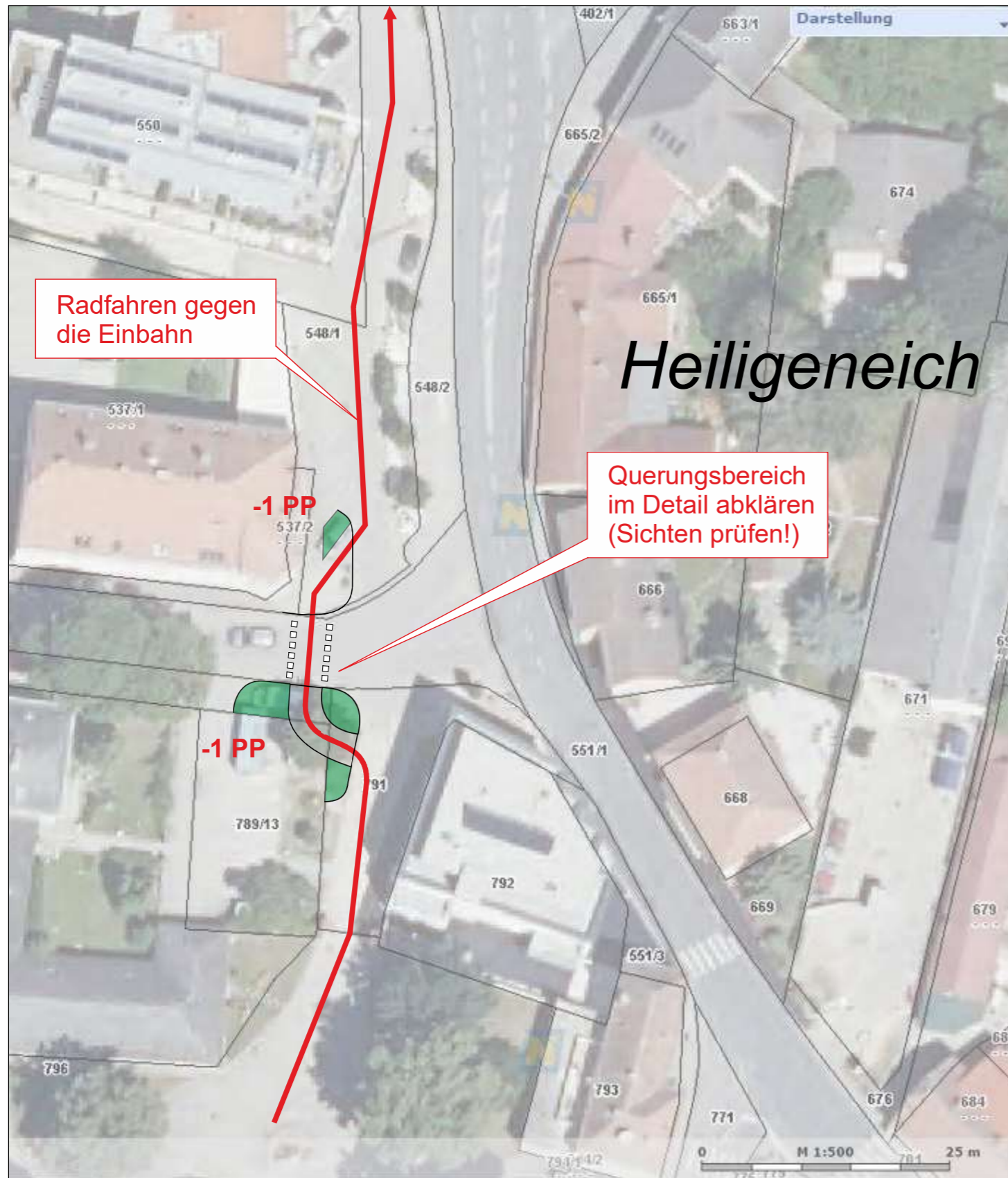
Abschnitt 3



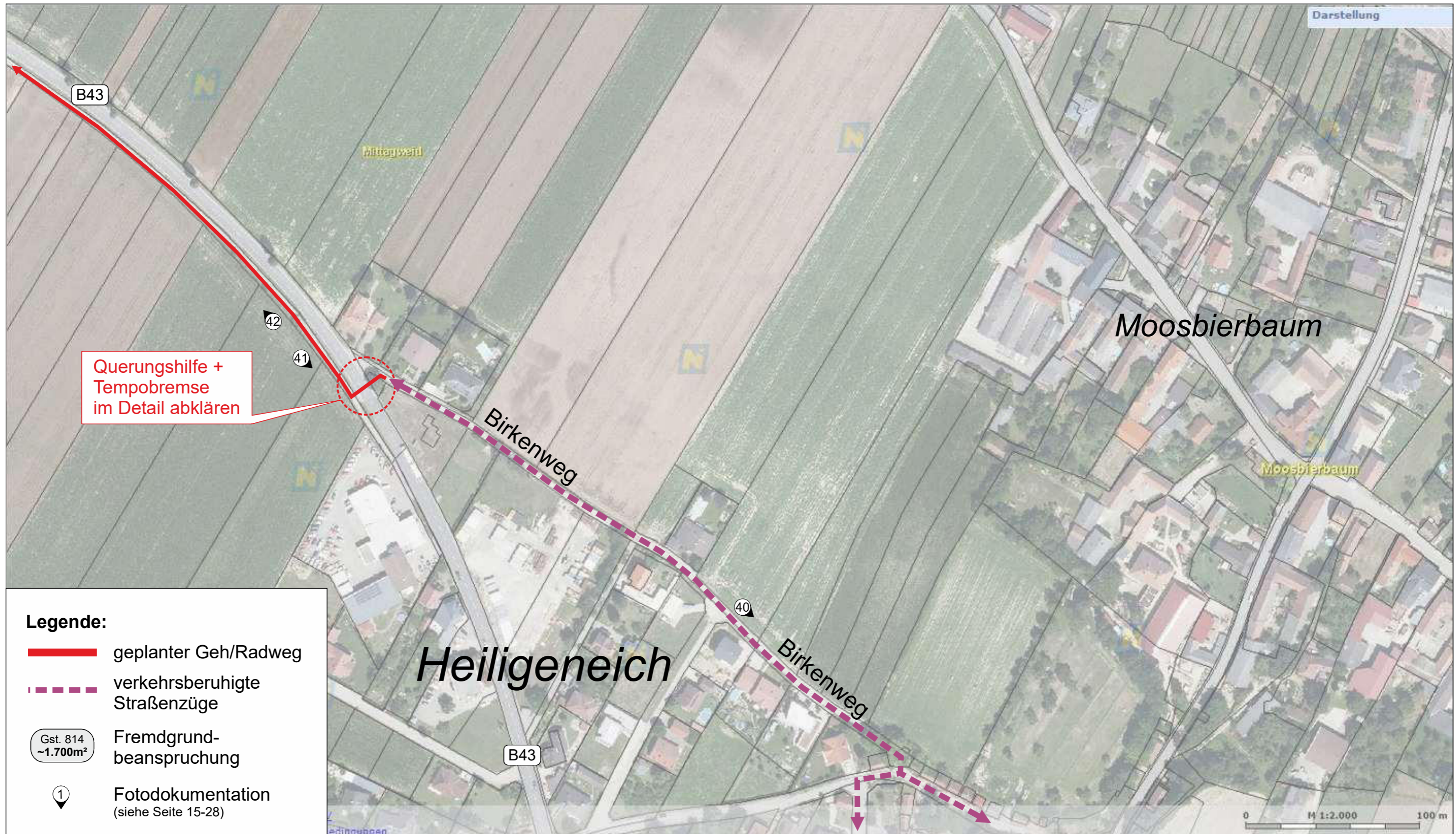


-  geplanter Geh/Radweg
-  verkehrsberuhigte Straßenzüge
-  Fremdgrundbeanspruchung
-  Fotodokumentation (siehe Seite 15-28)







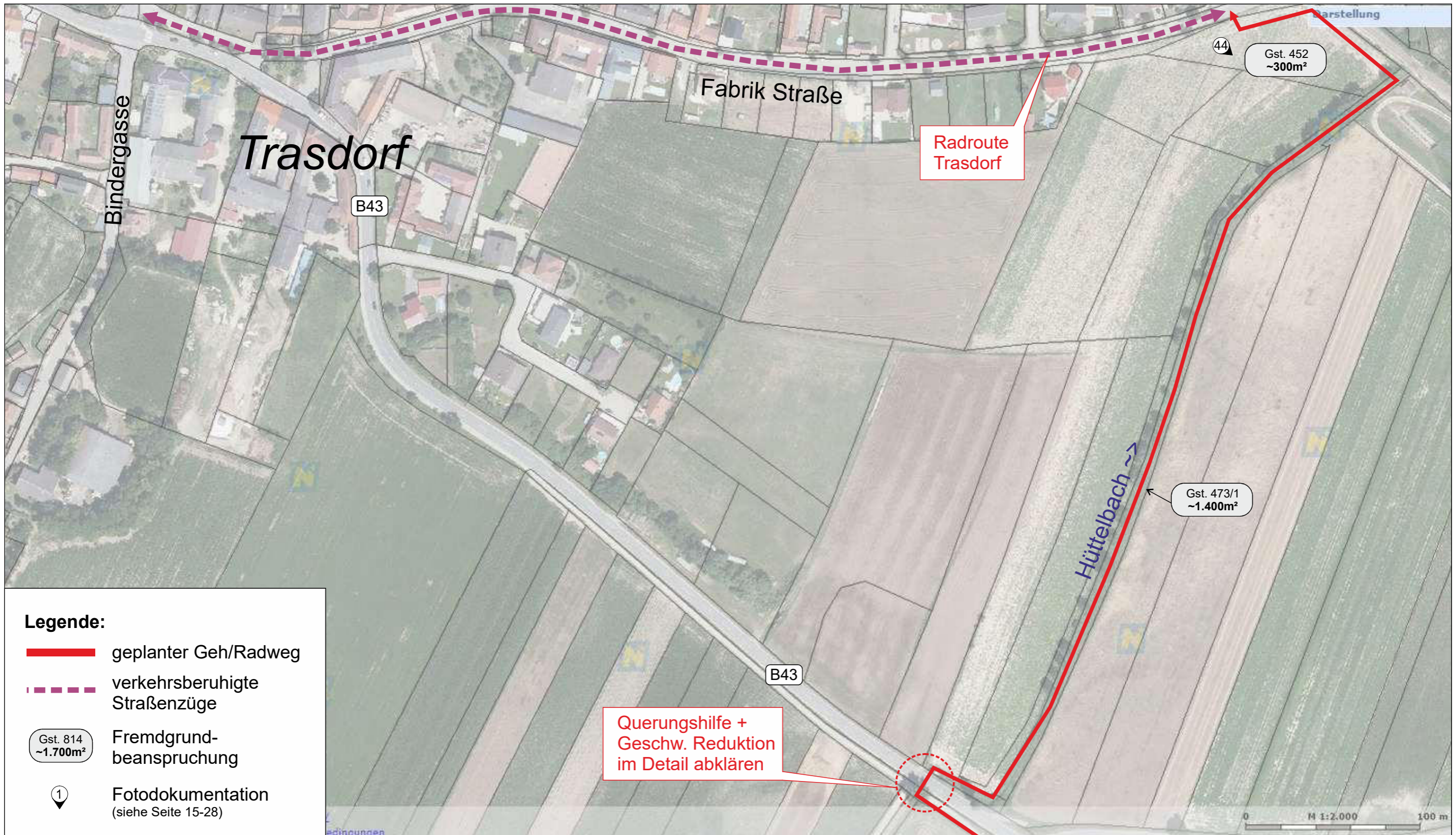




Legende:

- geplanter Geh/Radweg
- - - verkehrsberuhigte Straßenzüge
- Gst. 814
~1.700m² Fremdgrundbeanspruchung
- 1 Fotodokumentation (siehe Seite 15-28)

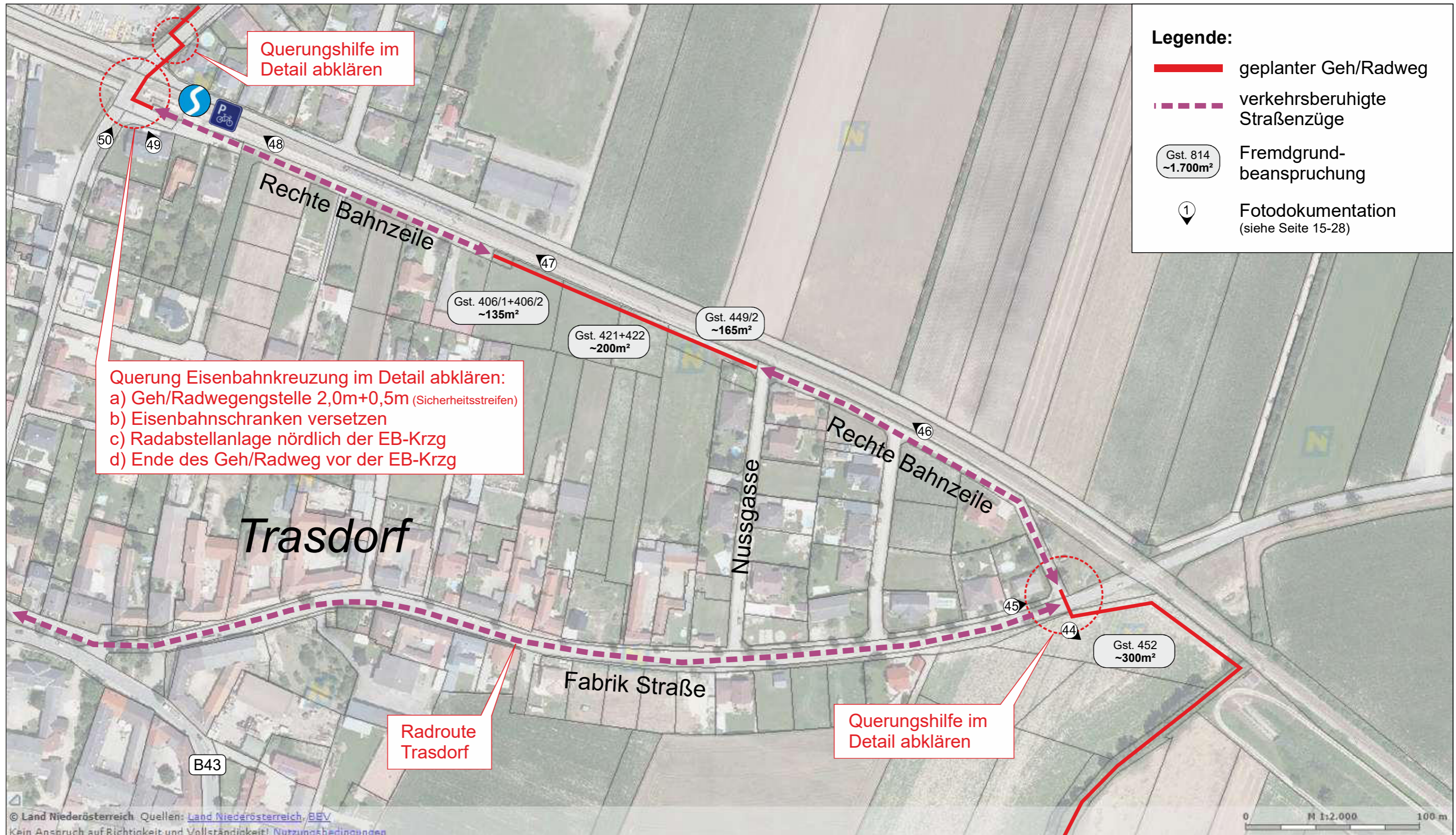




Legende:

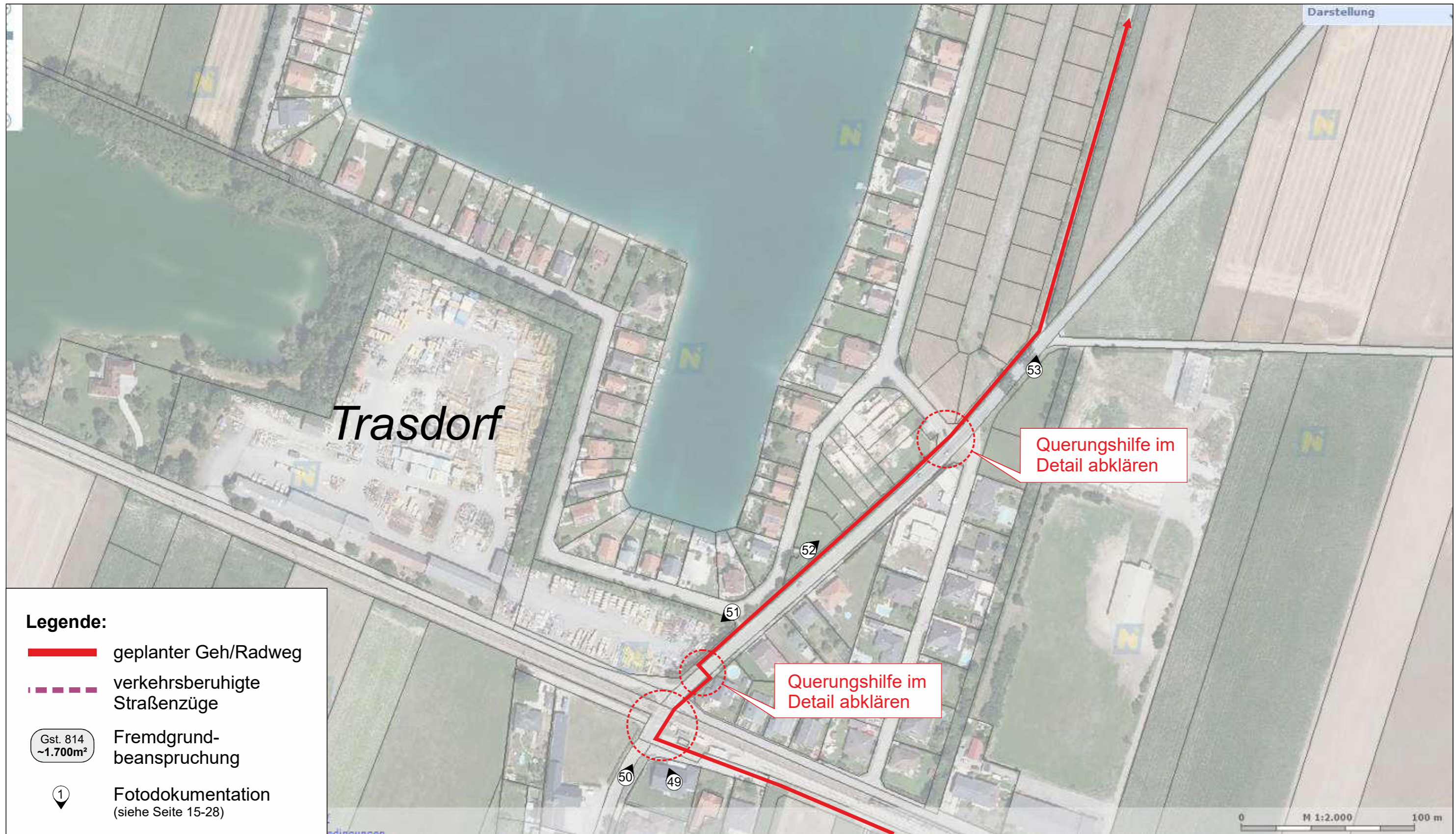
- geplanter Geh/Radweg
- - - verkehrsberuhigte Straßenzüge
- Gst. 814
~1.700m² Fremdgrundbeanspruchung
- 1 Fotodokumentation (siehe Seite 15-28)

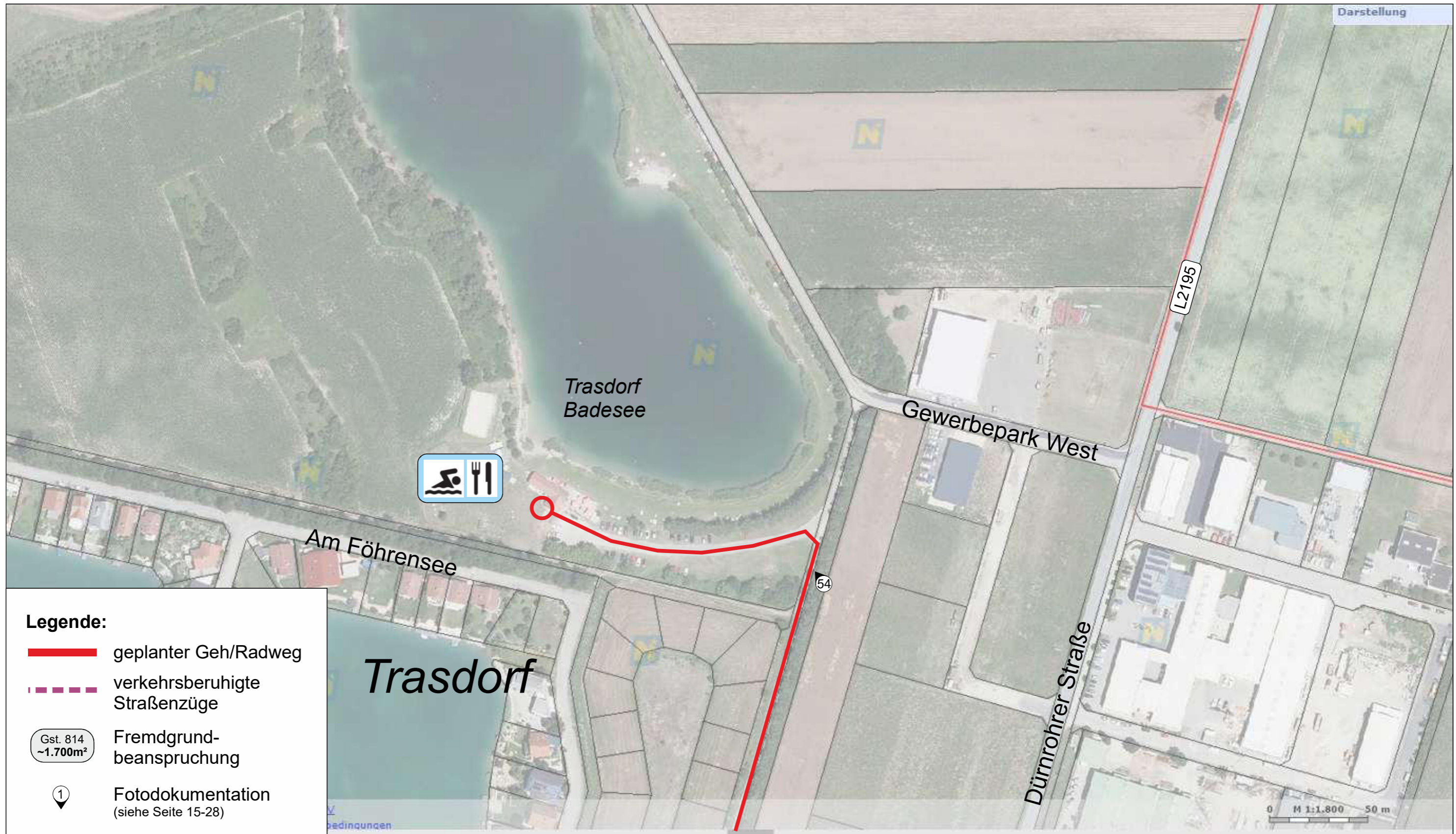




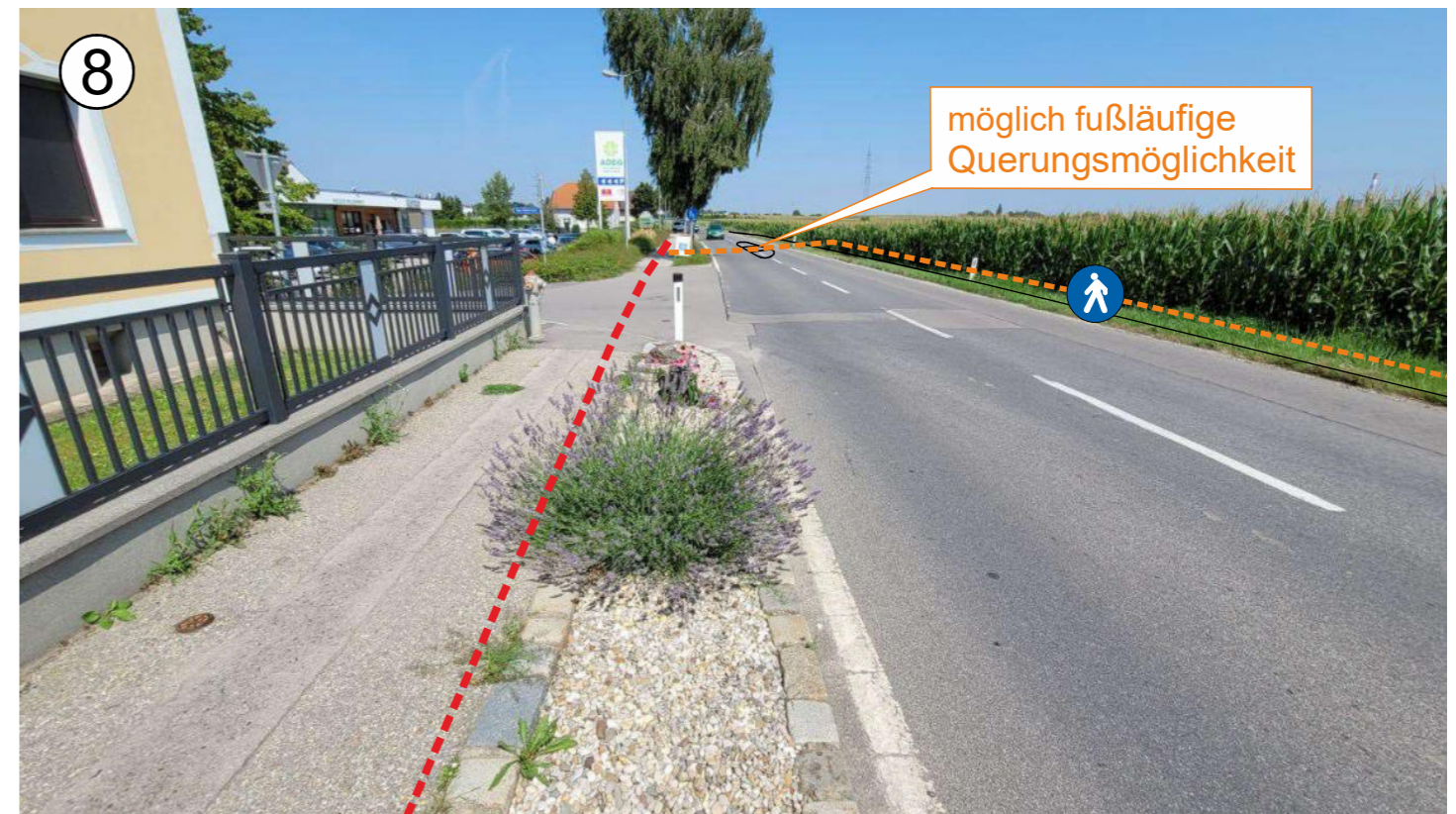
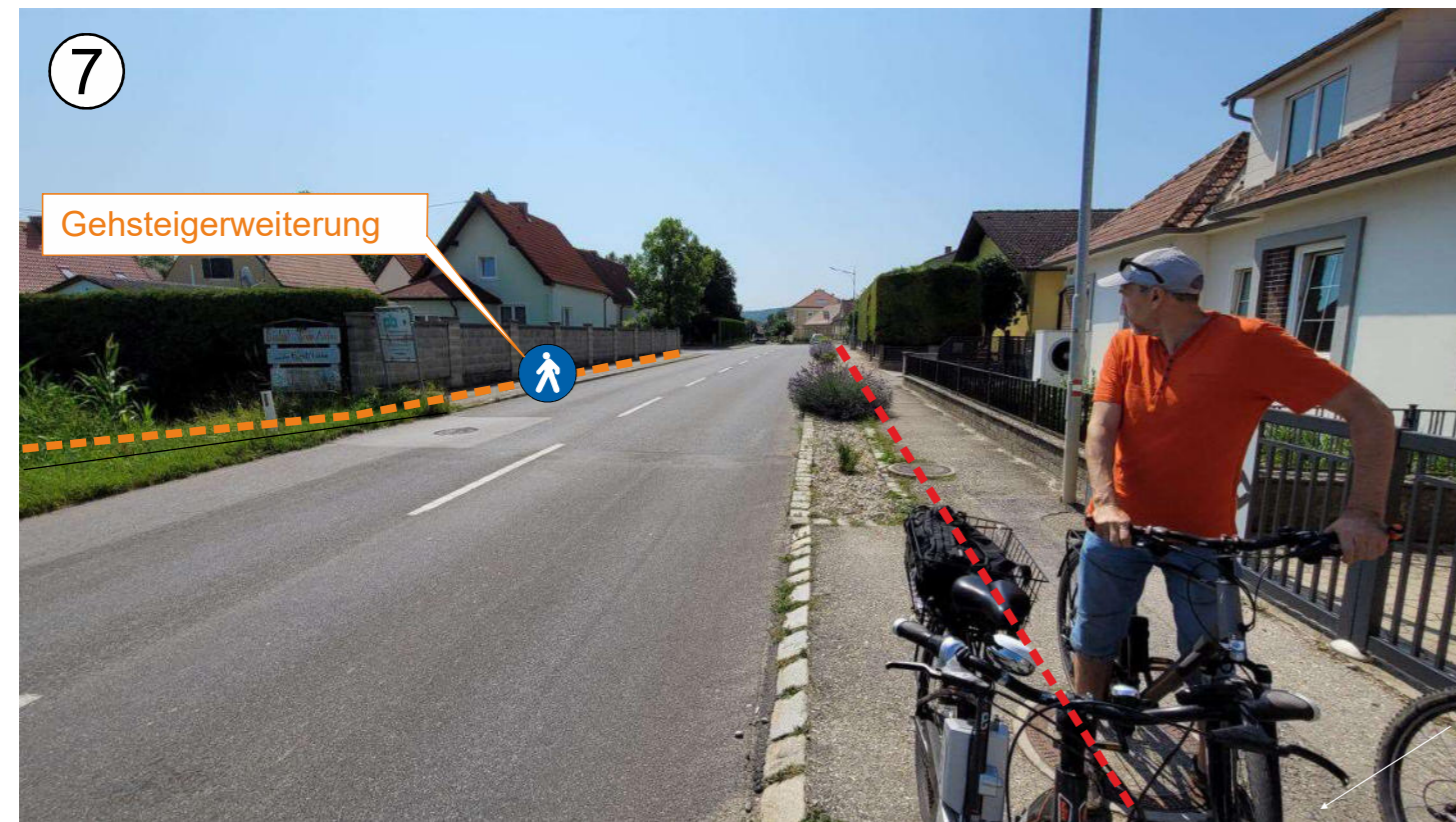
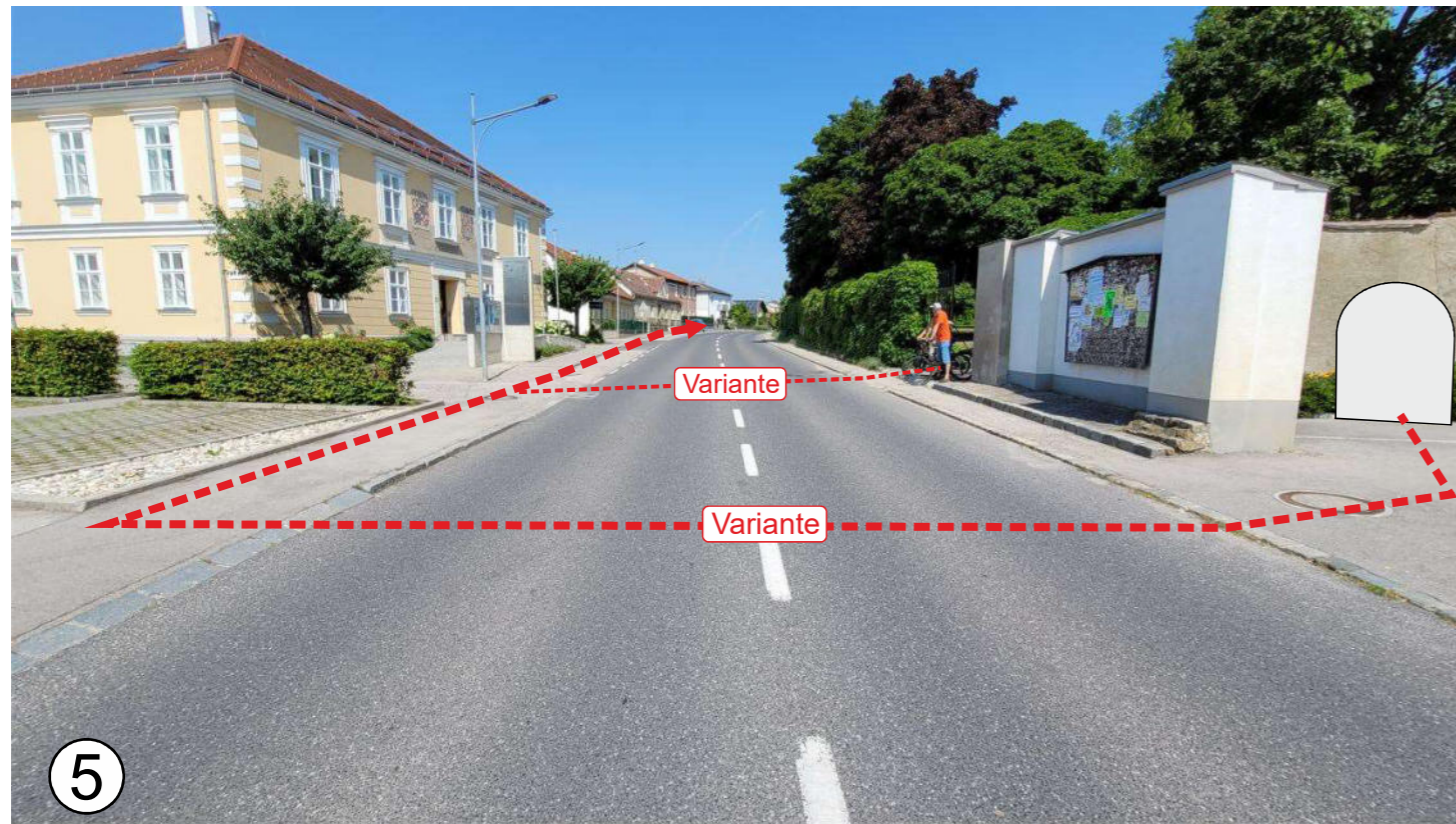
© Land Niederösterreich Quellen: Land Niederösterreich, BEV
Kein Anspruch auf Richtigkeit und Vollständigkeit! Nutzungsbedingungen





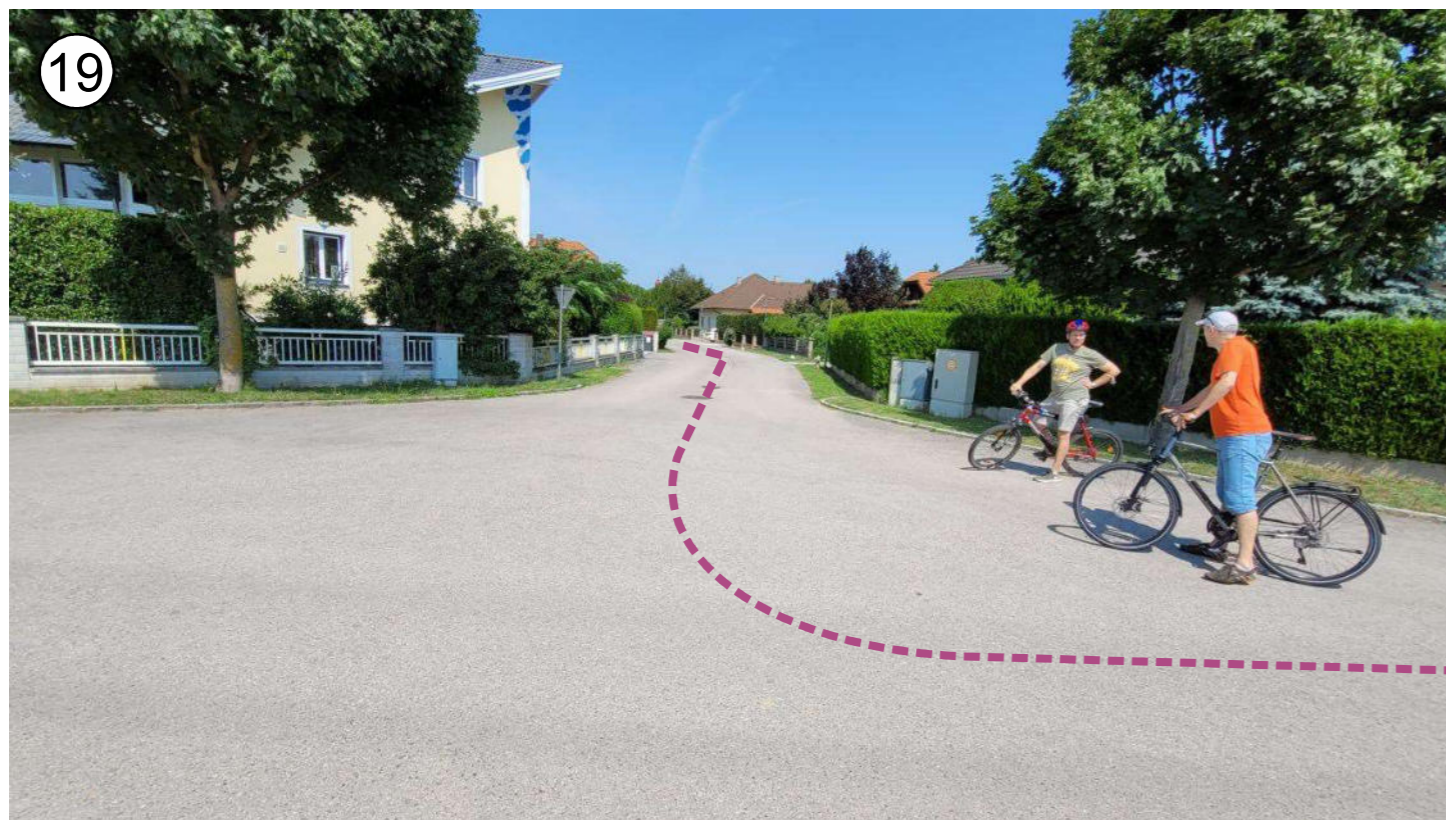
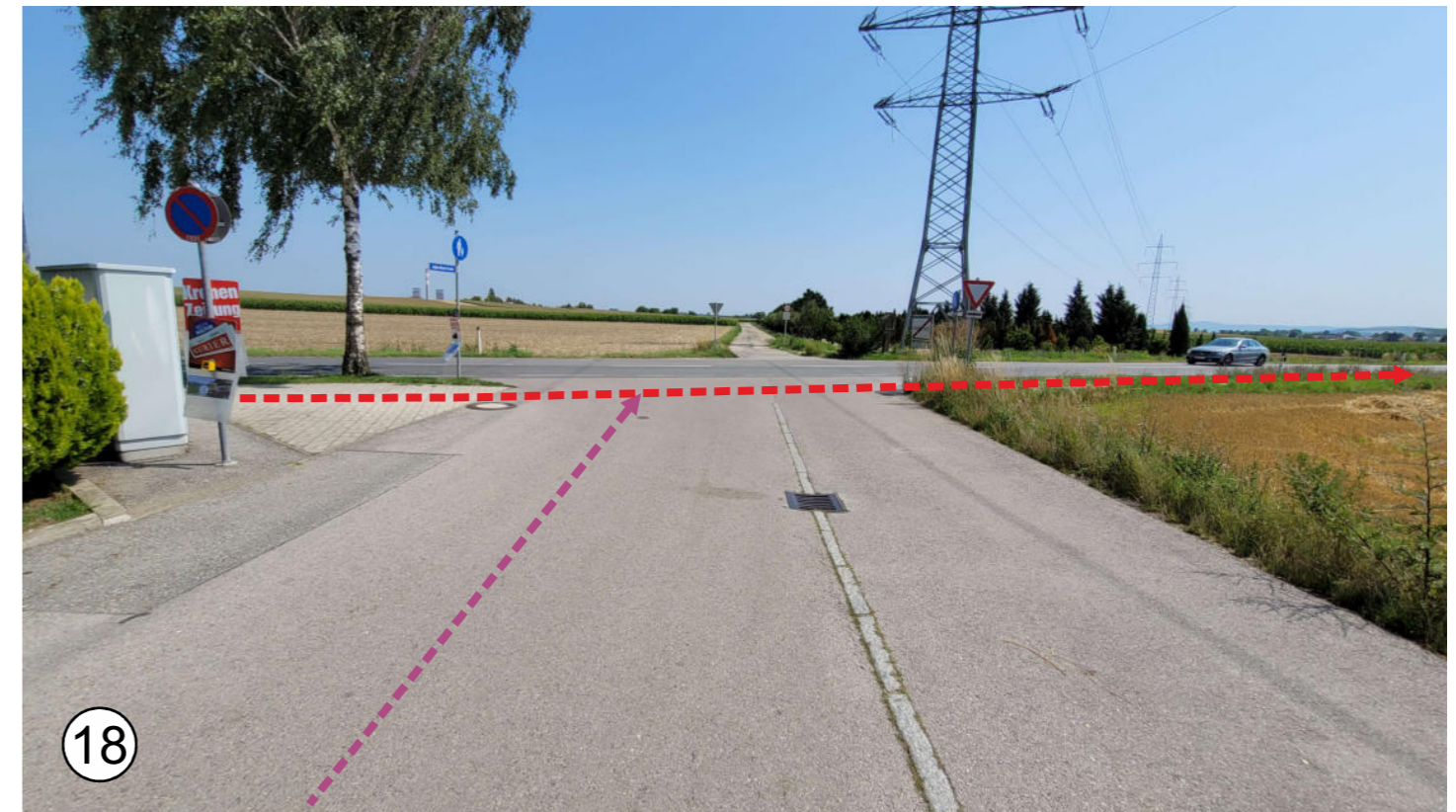


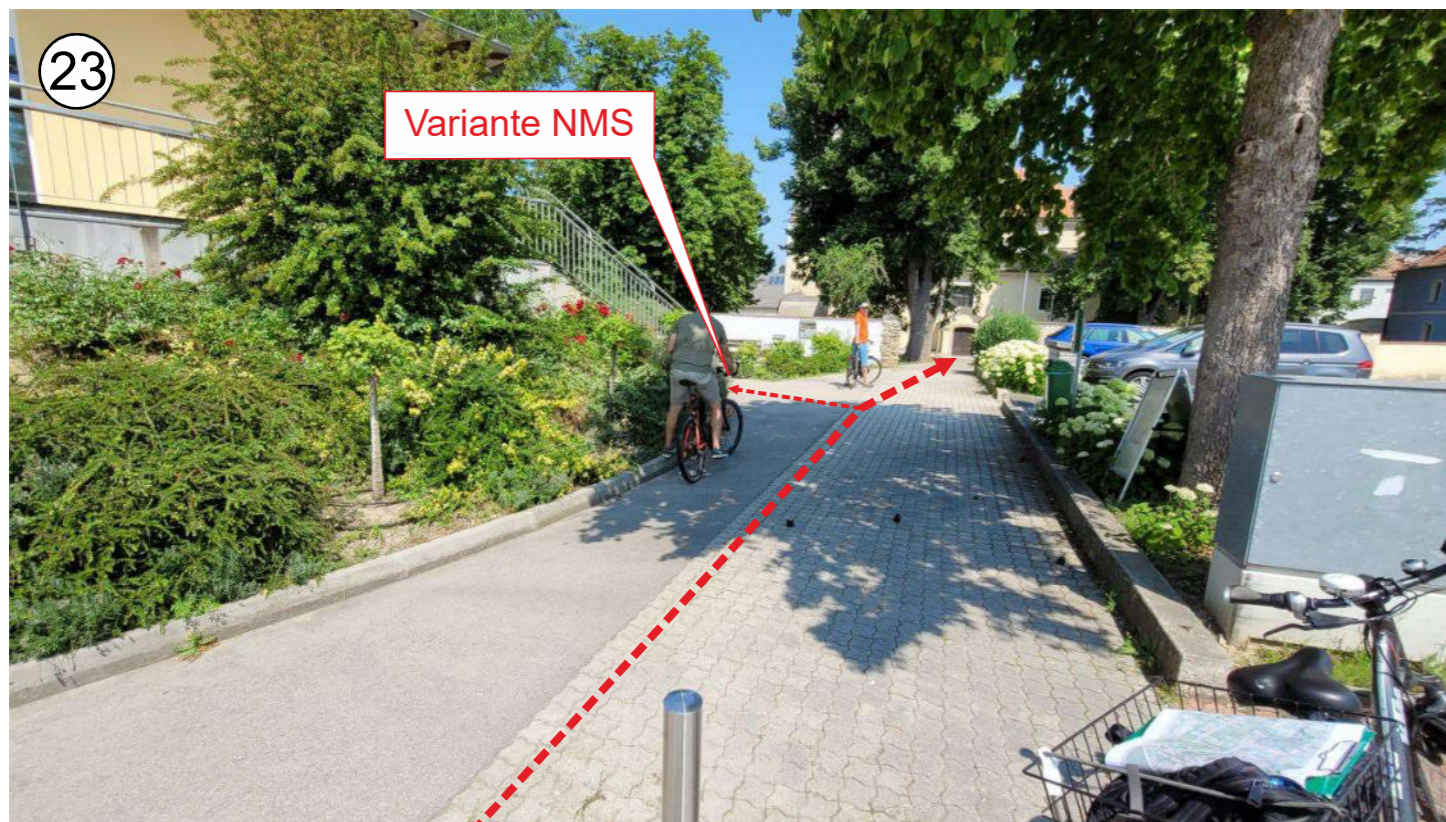
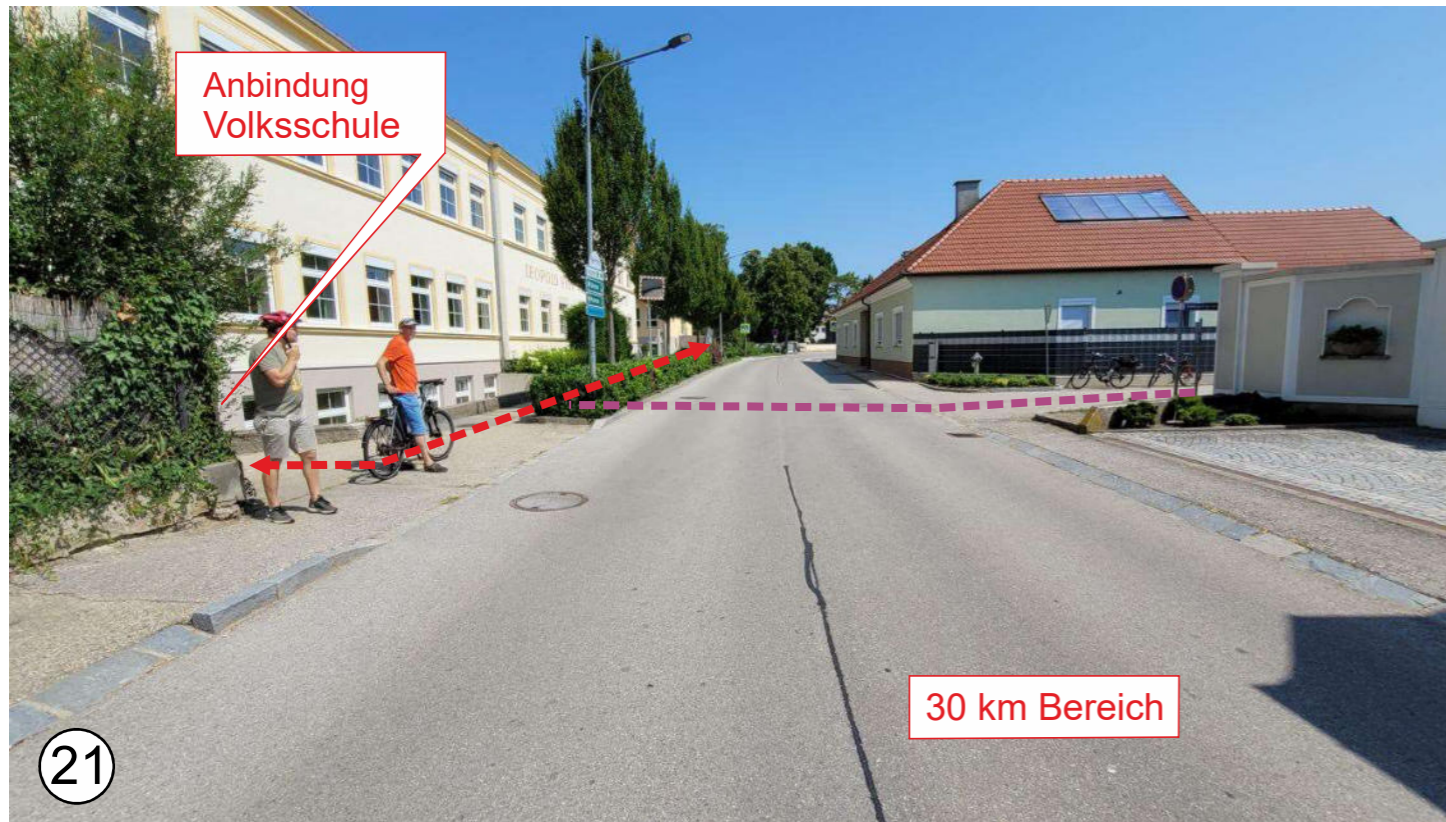


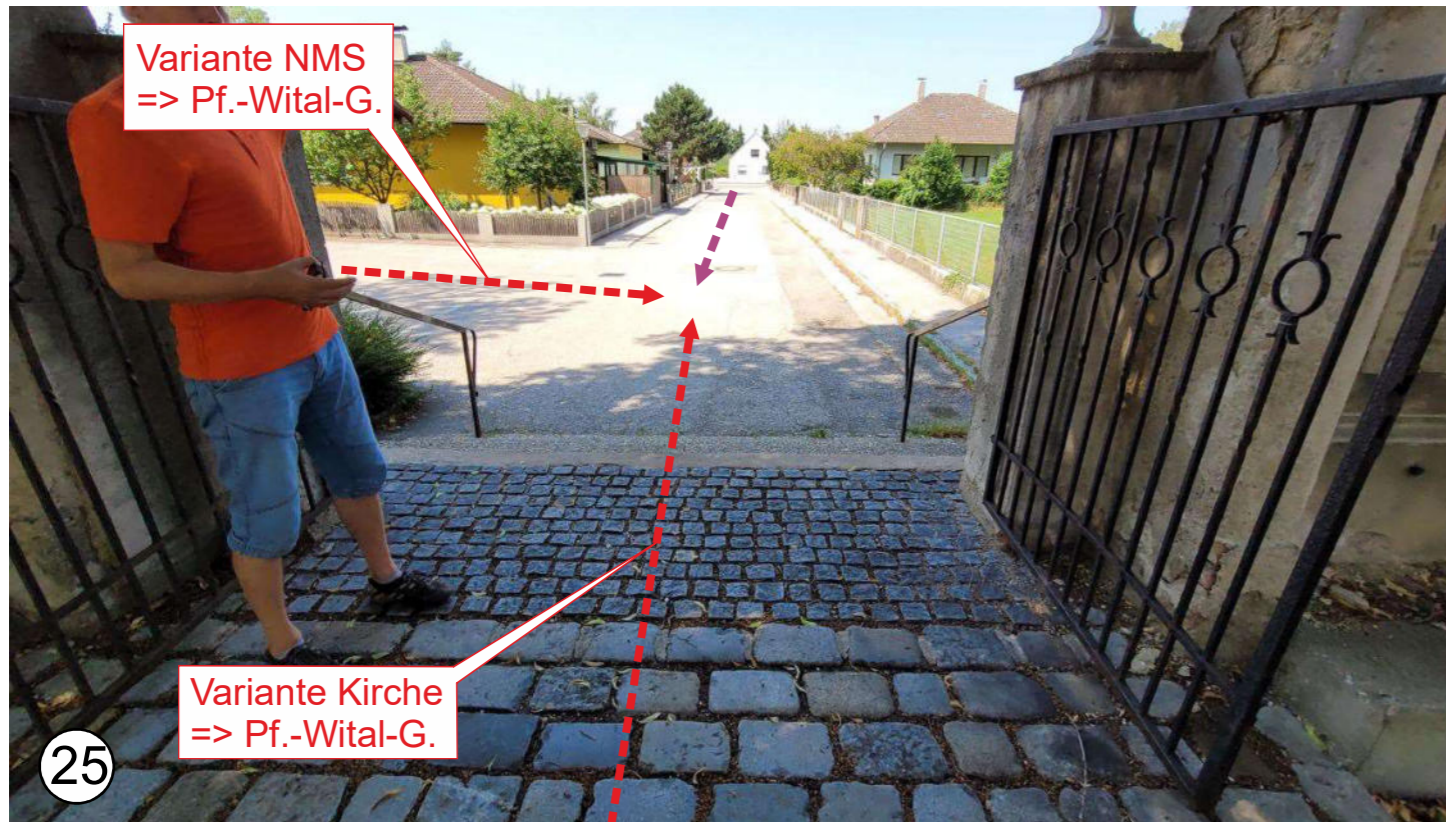


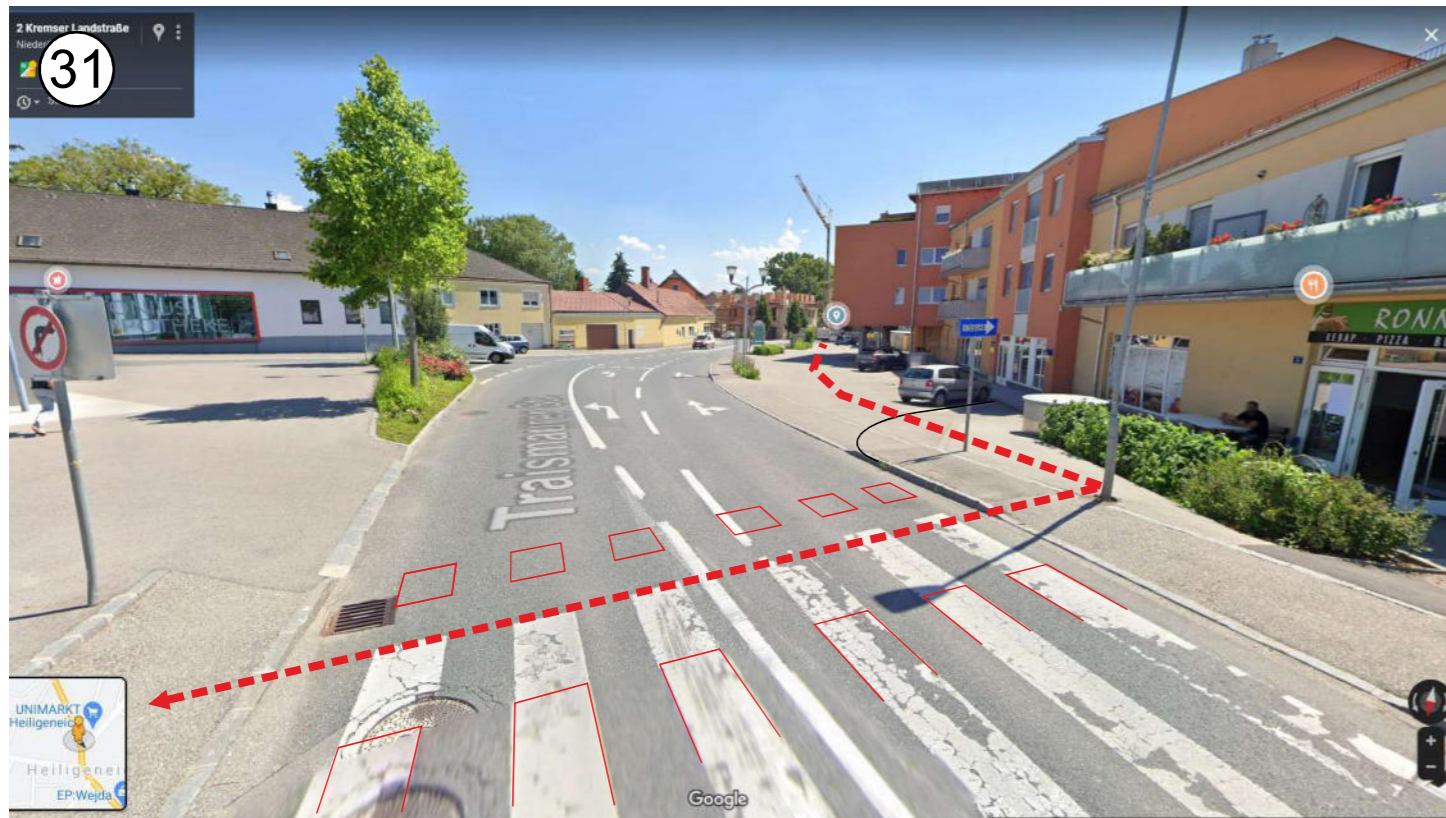


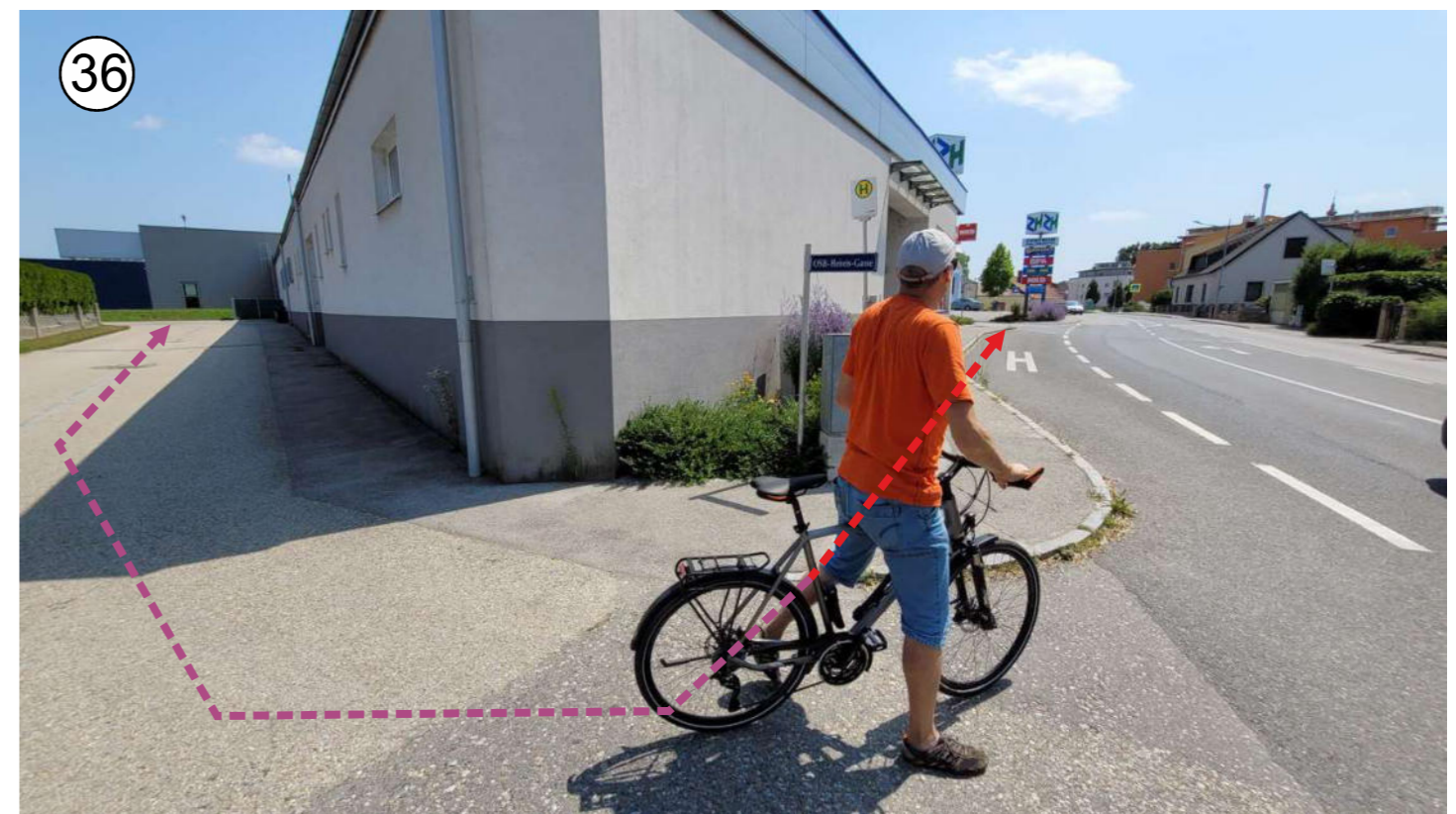
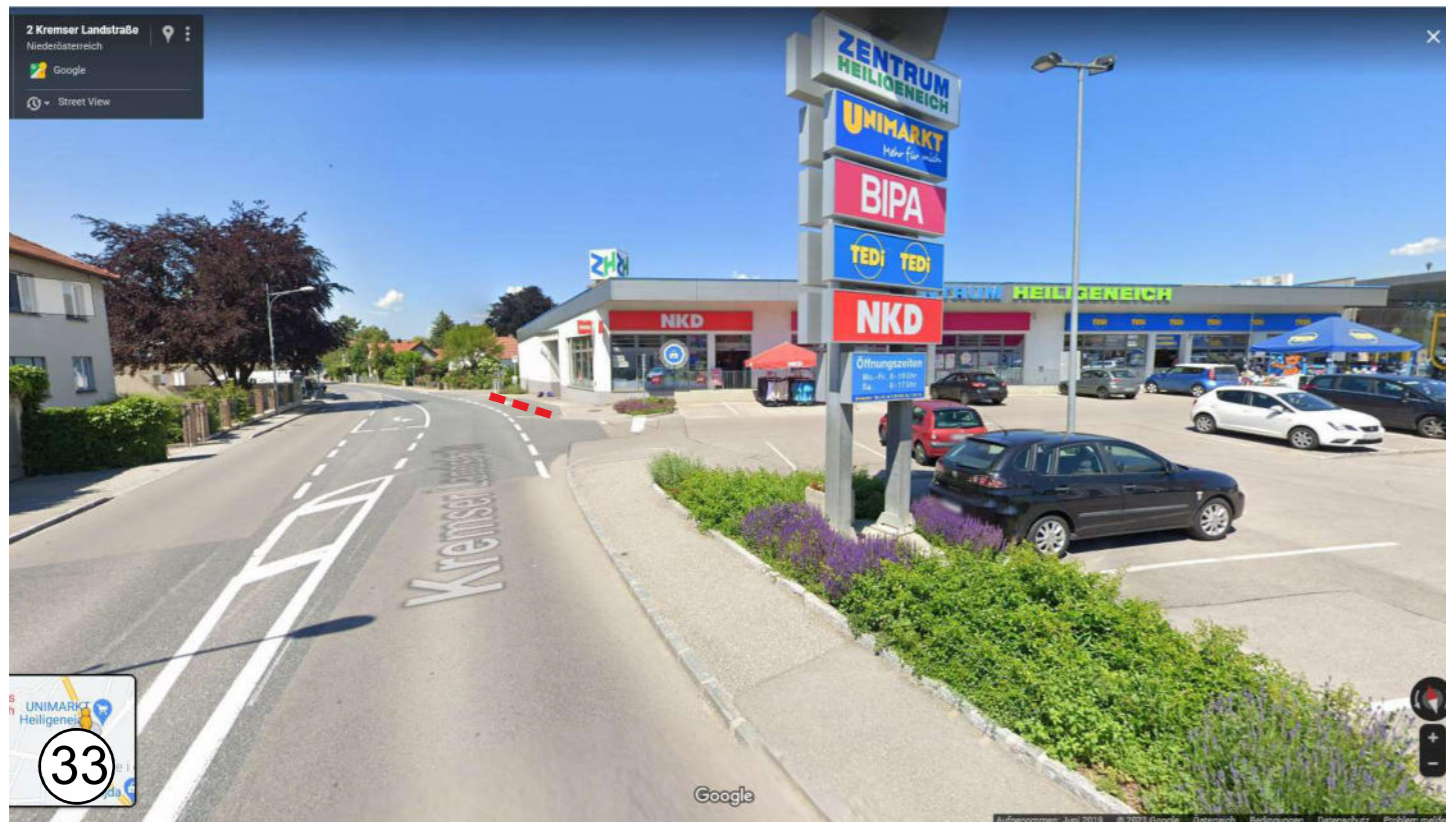


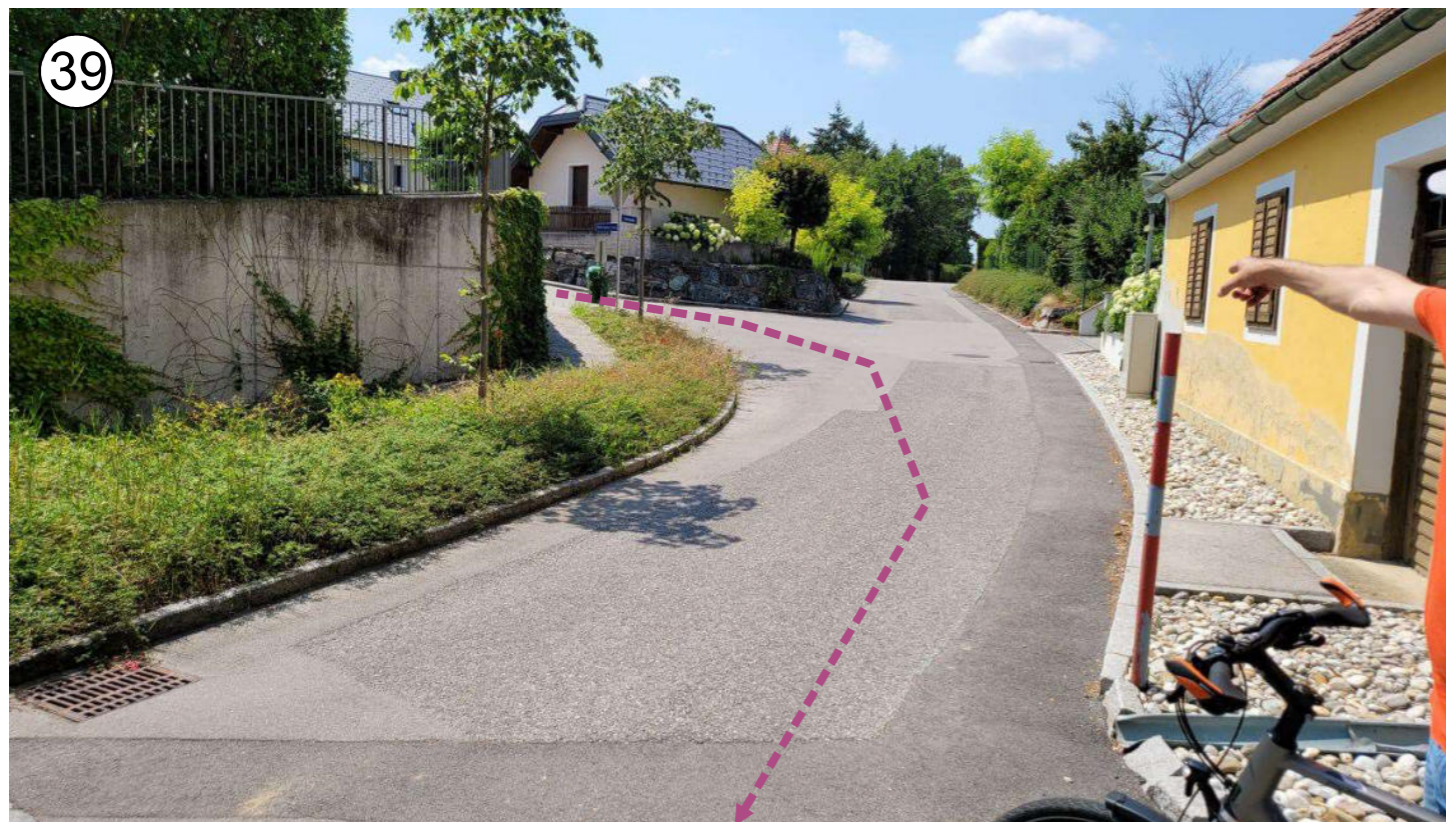
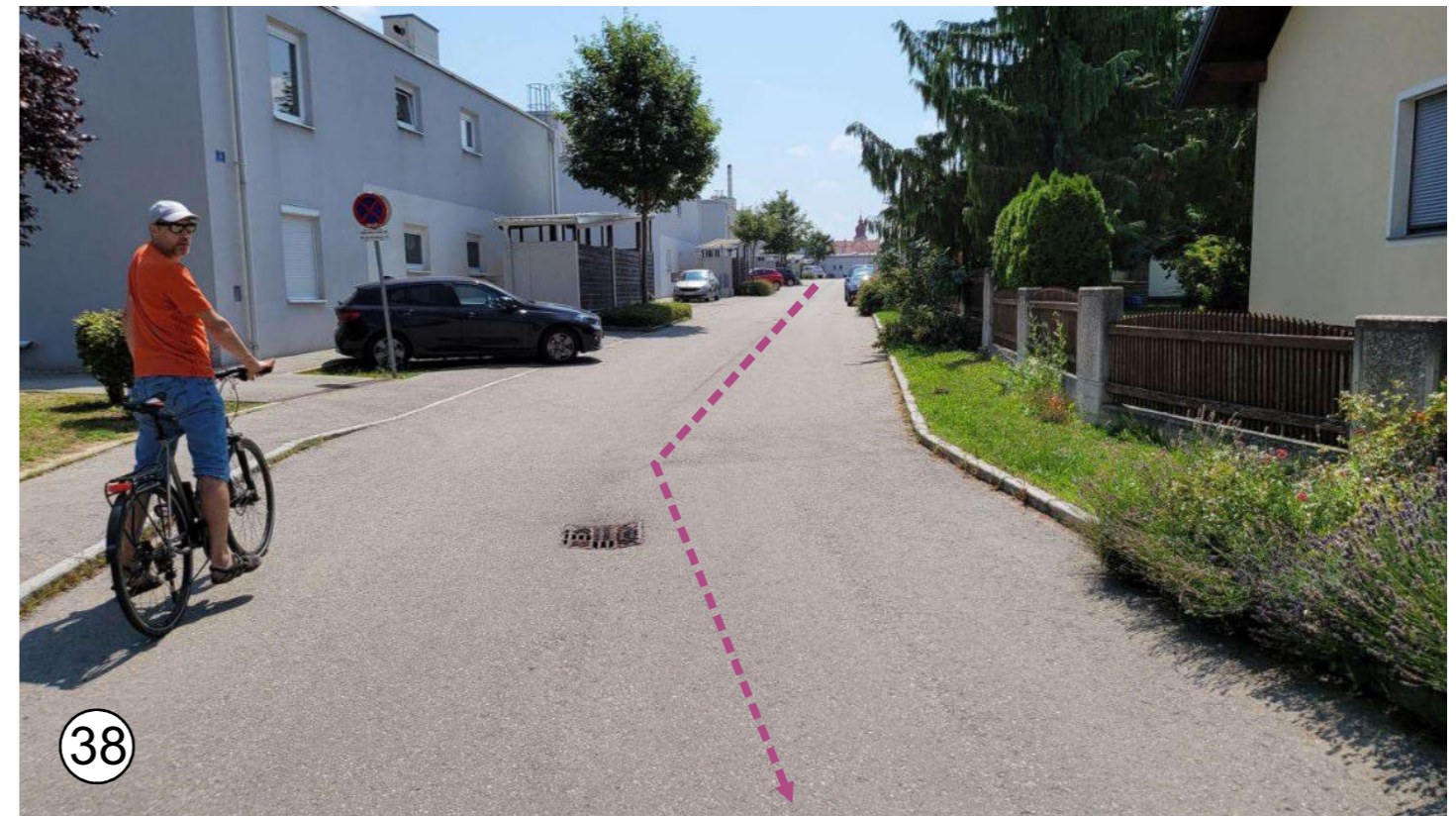


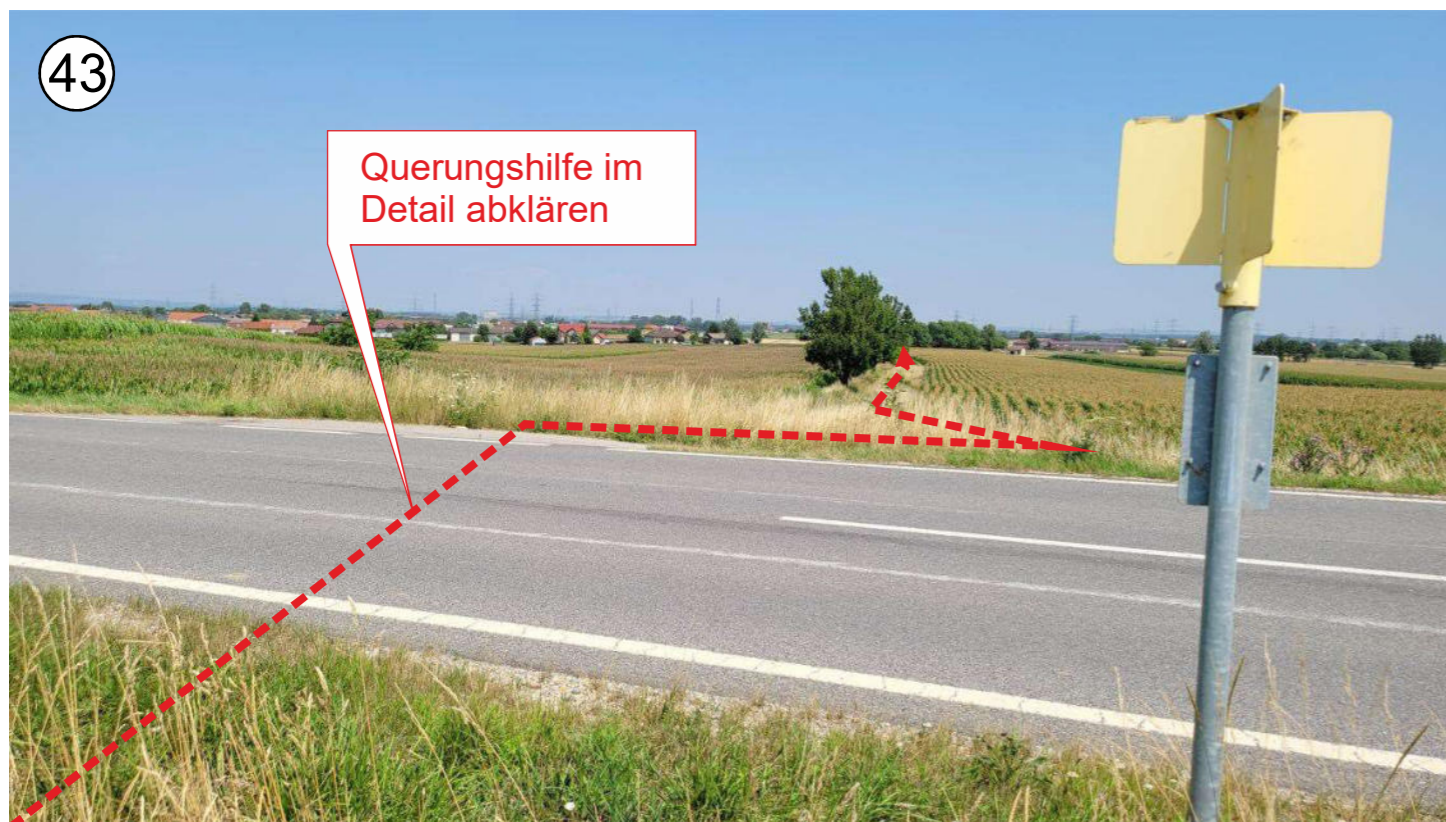
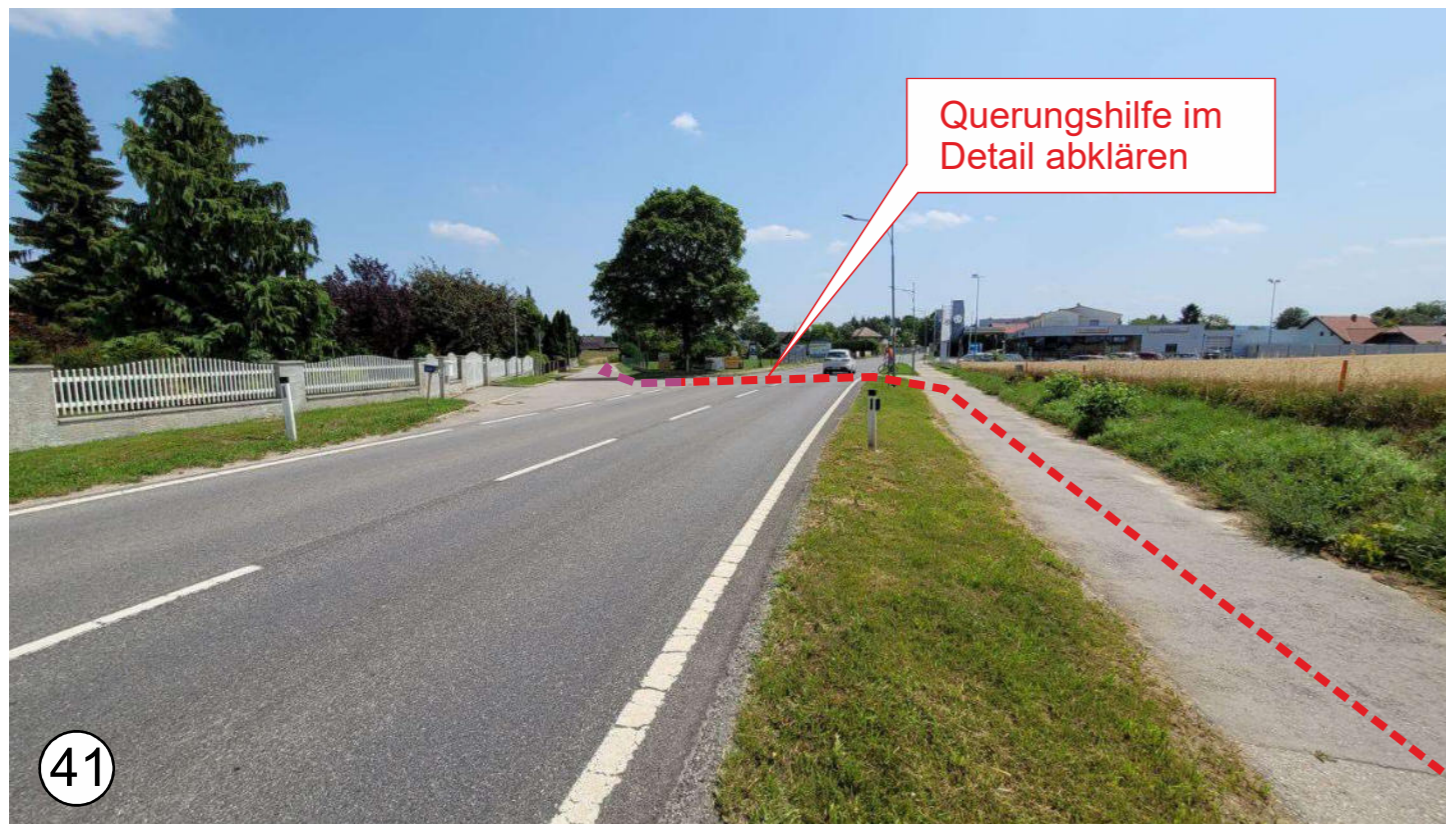








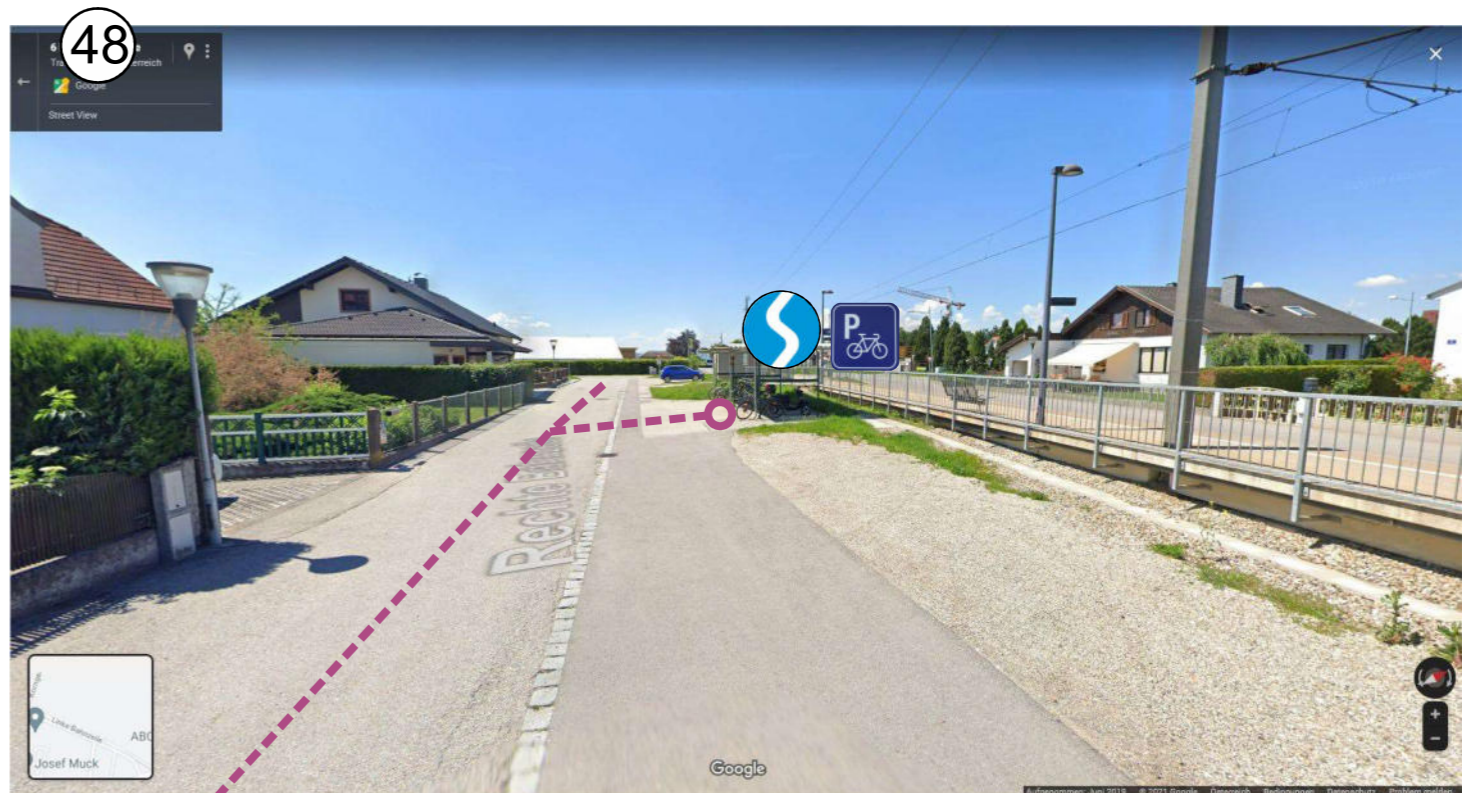






45

46



47

48

